



Unit 5L, Delta Drive, Tewkesbury, Glos. GL20 8HB. United Kingdom.

## E-600 WINDING MACHINE

### DESCRIPTION Medium-sized "Power house!" Winding Machine.

Equipped with: -

- ✓ Traverse head
- ✓ Sturdy base
- ✓ Tailstock - with security lock,
- ✓ Guider system
- ✓ & Safety shielded foot pedal.
- ✓ Controlled by numeric PLC and electronic programming.

This machine is designed for the manufacture of solenoids, inductors, distribution and power transformers, with capacity to make multiple windings and a wide range of wire sizes.

There are various configurations of speed ranges, (depending machine version). This produces a fast cycle time for high turn primary windings.



### TECHNICAL CHARACTERISTICS.

Max. Distance between points .....	650mm
Max winding length. ....	600mm
Max. Ø of winding. ....	420mm
Height from center face plate to machine base. ....	300mm
Face plate diameter. ....	220mm
Tailstock Morse Cone .....	N° 2
Guider precision.....	0,001 mm
Spindle Resolution.....	0,01 turns
Main shaft motor (Parker).....	Brushless servomotor
Guider motor (Brushless servomotor) .....	1.2Nm
Weight (approx).....	250 Kg
Electrical source.....	220Vac - 50Hz
Wire guide.....	Included
Machine aluminum base table (with electrical cabinet) .....	Included

We aim to be much more than a machinery supplier. Our team has a vast range of winding experience and is able to offer help and advice on all aspects of coil winding, from tooling design to machine choice and set-up.

**~ Coil winding solutions you can rely on ~**



Working with local partners in the following countries;

Austria, Czech Republic, Germany, Hungary, Poland, Portugal, Romania, Slovakia, Slovenia, Spain, Sweden.



## Torque and speed

Winding shaft speed..... 400 rpm / 300 rpm

(\*\* There are many version of this machine, two examples are shown here)

Belt Position	version - 400 RPM		version - 300 RPM	
	Speed (Rpm)	Torque (Nm)	Speed (Rpm)	Torque (Nm)
1	400	70	300	130

## PROGRAMMING CHARACTERISTICS.

User interface .....7inch (178 mm) Color Touch Screen

No. of programmable windings ..... Max. 10,000 (per SD card)

No. of windings per coil..... Max. 200

Software languages. ....(English/German/Spanish/Czech/Hungarian/ Norwegian )

Type of programming ..... CNC

Delivery Time ..... 60 Days from order confirmation

## KEY BENEFITS OF THE NEW E-600

### Energy Efficiency

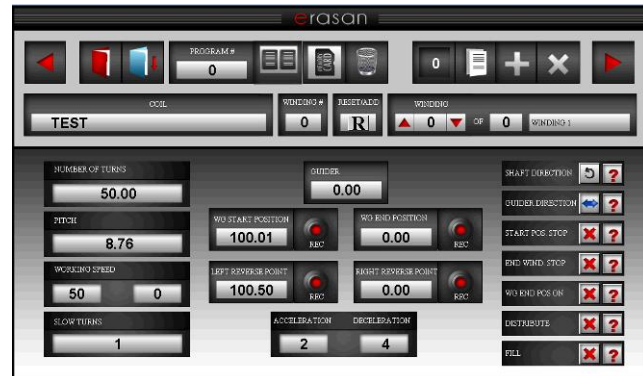
The “green efficiency” concept of this machine reduces power consumption. All motors are synchronous and each movement has been optimised for improved energy efficiency.

### SIMPLE & EFFECTIVE MACHINE OPERATING SOFTWARE

The all-new machine operating software has an intuitive graphical interface and a 7-inch (177mm) full colour touch screen - with user’s choice of language - making programming a new coil easier than it has ever been.

Program storage is now done directly to a standard SD card.

This allows a fast simple backup, with the option of windows™ software, WIN bobbin for full PC connectivity.



We aim to be much more than a machinery supplier. Our team has a vast range of winding experience and is able to offer help and advice on all aspects of coil winding, from tooling design to machine choice and set-up.

**~ Coil winding solutions you can rely on ~**



Working with local partners in the following countries;

Austria, Czech Republic, Germany, Hungary, Poland, Portugal, Romania, Slovakia, Slovenia, Spain, Sweden.