



Unit 5L, Delta Drive, Tewkesbury, Glos. GL20 8HB. United Kingdom.

E-900 SGB WINDING MACHINE

Medium-sized bench Winding Machine. Equipped with: -

- ✓ Traverse head
- ✓ Sturdy base - constructed from welded steel for strength and durability.
- ✓ Face plate.
- ✓ Guider system
- ✓ Safety shielded foot pedal.
- ✓ CNC motion controller and simple electronic programming.
- ✓ Tailstock - with security lock.



The applications of this machine include the manufacture of solenoids, inductors, and transformers, with capacity to make multiple windings and even distribution and power transformers from 10 to 600 KVA.

There are various configurations of speed ranges, up to 3.000 r.p.m. This allows winding of primaries easily and with very short production cycle times.

TECHNICAL CHARACTERISTICS.

Wire Ø and profile wire	0.01 – 10mm
Max winding length	800 mm
Max distance between points	900 mm
Max Winding Ø	560 mm
Guider precision	0.01 mm
Winding shaft speed.	1,500 /3,000 r.p.m**
Torque and speed	(** There are two versions of this machine each having four gear positions)

Gear Position	1500 RPM version		3000 RPM version	
	Torque (Nm)	Speed (Rpm)	Torque (Nm)	Speed (Rpm)
1	26	1500	15	3000
2	39	1000	19	2000
3	156	250	78	500
4	234	166	117	330

We aim to be much more than a machinery supplier. Our team has a vast range of winding experience and is able to offer help and advice on all aspects of coil winding, from tooling design to machine choice and set-up.

~ Coil winding solutions you can rely on ~



Working with local partners in the following countries;

Austria, Czech Republic, Germany, Hungary, Poland, Portugal, Romania, Slovakia, Slovenia, Spain, Sweden.



Unit 5L, Delta Drive, Tewkesbury, Glos. GL20 8HB. United Kingdom.

Main shaft motor	Brushless Servo Motor
Guider motor (Brushless)	0.4HP / 300W (2.2Nm)
Air supply	6 Bar – low consumption
Electrical supply	3 x 380Vca - 50Hz

PROGRAMMING CHARACTERISTICS.

User interface	10inch (254 mm) touch screen
No. of programmable windings.....	Max. 16,000 (per SD card)
No. of windings per coil.....	Max. 200
Type of programming.....	CNC
Delivery time (approx).....	90 Days from order confirmation.

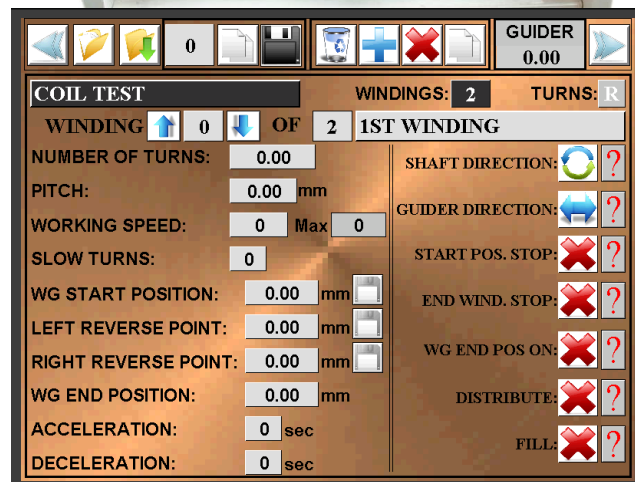
Key new features of this machine - E-900-SGB (Switch Gear Box).

Increased flexibility for the machine speed ranges and higher torque has been achieved by the use of a powerful brushless servo motor, and equipping the machine with a 4-speed gear box. This allows the operator to select an appropriate maximum winding speed and torque for each individual task.

The wide speed range of up to 3,000 r.p.m. provides high speed winding of high turns count coils, e.g. primaries to ensure very fast production times.

The all-new machine operating software has an intuitive graphical interface and a 12-inch (304mm) full colour touch screen - with user's choice of language - making programming a new coil easier than it has ever been.

Programs are stored on solid-state media - directly to a standard SD memory card. This allows a fast and simple backup, with the option of Windows™ software - "WINbobbin" - for full PC connectivity.



We aim to be much more than a machinery supplier. Our team has a vast range of winding experience and is able to offer help and advice on all aspects of coil winding, from tooling design to machine choice and set-up.

~ Coil winding solutions you can rely on ~



Working with local partners in the following countries;

Austria, Czech Republic, Germany, Hungary, Poland, Portugal, Romania, Slovakia, Slovenia, Spain, Sweden.